

**LSNERR Boundary**

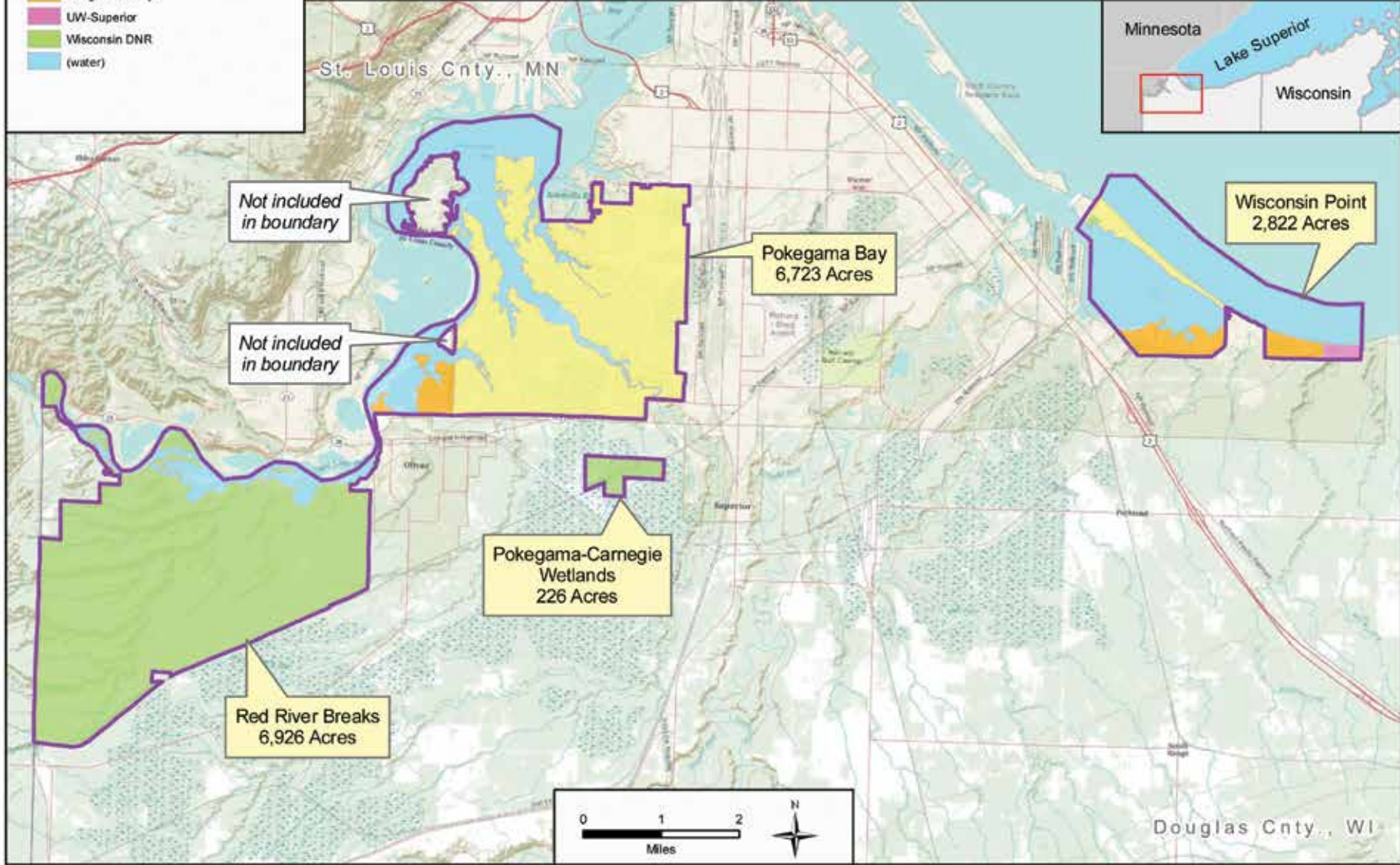
**Ownership**

- City of Superior
- Douglas County
- UW-Superior
- Wisconsin DNR
- (water)



# Lake Superior National Estuarine Research Reserve

Produced by: M. Kostnik, Mar. 2, 2010  
 Data: USGS, Wis. DNR, Wis. DOT, ESRI  
 Douglas County, City of Superior  
 Map Coordinate System:  
 Wis. Transverse Mercator NAD 83 (1991)  
 Note: parcel acreage is approximate



LakeSuperiorReserve.org



The Lake Superior National Estuarine Research Reserve is part of the National Estuarine Research Reserve System (NERRS), established by Section 315 of the Coastal Zone Management Act, as amended. Additional information about the system can be obtained from the Estuarine Reserves Division, Office for Coastal Management, National Oceanic and Atmospheric Administration, U.S. Department of Commerce, 1305 East West Highway - N/ORMS, Silver Spring, MD 20910.

An AA/EEO employer, University of Wisconsin-Extension provides equal opportunities in employment and programming, including Title IX and ADA requirements